

Salt Air

Spring 2004 Issue
Community Radio WERU News & Program Guide

WERU-FM 89.9 Blue Hill & 102.9 Bangor - A Voice of Many Voices - Serving Downeast & Midcoast Maine



Happy Sweet Sixteen!

By Matt Murphy,
General Manager

On May 1st this wonderful grassroots collaboration of people, organizations, technology, philosophy, democracy, artistry and education known as Community Radio WERU-FM will celebrate sixteen years of broadcasting. Yup, our baby is now well into its teen years and growing up nicely because each year it continues to have a positive impact on the community it serves, which in turn continues to nurture and support it generously in a multitude of ways.

Among the many gifts for this year's birthday celebration is one that definitively says, "WERU makes a difference!" The board, staff and volunteers of WERU are both proud and humbled to have

the station recognized by Maine Initiatives as a 2004 Watering Can Award recipient. The award is given annually to a select few organizations, activists and philanthropists that "exemplify the spirit of social change in Maine." We are truly grateful to receive this honor from the good folks at Maine Initiatives, which is a "fund for change that cultivates social, economic, and environmental justice through grants and other support to grassroots organizations in Maine communities." This award is a wonderful affirmation of all the work and love dedicated to Community Radio by so many people over the years, from those you hear on the air to those who listen and then send in a check or some good energy for the community we serve. At WERU we strive to inform, entertain and inspire listeners so that community can grow and blossom all year round. Everyone who has contributed to WERU in any way, shape or form has helped us to flourish as a community resource and to earn this award. Thank you, sincerely, to everyone out there who supports WERU. (Learn more about the Watering Can Awards at www.maineinitiatives.org, and send Maine Initiatives an email or note of thanks for

Maine Initiatives



recognizing our Community Radio Station as something special.)

So how about a party to celebrate? OK then, you are all invited to WERU's Sweet Sixteen Birthday Open House and Concert on Saturday, May 1st at WERU in East Orland (between Bucksport and Ellsworth on U.S. Route 1). We'll have a potluck supper beginning at 5 p.m. and a live broadcast variety concert featuring talented WERU volunteers and their friends at 6:00. Last year's bash was a hoot (and a really warm community gathering) so don't miss it this year, either in person or over the airwaves.

This is all sounding pretty good, huh? But wait, there's more! We can also celebrate the great job the station and community did with our March Pledge Drive, the first of the year, which ultimately raised over \$51,000 for Community Radio. Mail-in membership renewals got the drive off to a great start to the tune of \$10,000, \$35,000 was pledged during the week of on-air fundraising, and then another \$6,000-plus came in through the mail after we got back to our "regular programming."

What do successful pledge drives mean to WERU? They mean that we have funds to do things like repair or, when necessary, replace aging CD players, computers and other such technologies. They also mean that we have a solid financial base for our daily operations upon which we can build and support grants, when we are fortunate enough to receive them! Grant funding for special projects increase our capacity to serve listeners and engage the community, such as the WERU Local News Project and the Common Health Projects. (Read Ron Beard's articles about both initiatives in this edition of Salt Air). Listener support goes a long way in the right direction for WERU.

Of course volunteer power will always be essential and in late March through mid-April WERU training staff (paid staff and experienced volunteer programmers from our Programming Advisory Committee) welcomed new volunteers to the family by conducting new volunteer orientation and training sessions for approximately twenty-five interested people. We offer this free instruction in the basics of community radio broadcasting (generally in the spring and fall) in order to keep the pathways of opportunity at WERU open to new voices, music and information, and to help keep WERU open to the community. Training participants learn about the mission, history, governance and operating structure of WERU, and receive a hands-on introduction to our broadcast and

(Continued on page 3)

WERU Presents Amy Goodman On the Waterfront A Brunch & Book Signing Event in Belfast

By Denis Howard, Development Director



Amy Goodman is the acclaimed host of Pacifica Network's program *Democracy Now!*. WERU airs this program each weekday from 5 – 6 PM. Amy, along with her brother David (also an accom-

plished author and journalist), has just written her first book and is embarking on a nationwide promotional tour.

Amy's book, *The Exception to the Rule: Exposing Oily Politicians, War Profiteers, And the Media That Love Them*, examines civil liberty laws, fair and balanced reporting, corruption among media monopolies, and the domination of politics by corporate concerns.

WERU will be bringing Amy to The Boat-house at 34 Commercial Street in Belfast on Sunday, May 16th from 10 AM – 12 PM. Amy will be speaking on the topics covered in

(Continued on page 3)

In this Issue

Articles:

WERU Community News	Page 1
Amy Goodman Event	Page 1
Programming Notes	Page 4
Radio Jones CD Review	Page 5
Youth Radio Update	Page 6
The DFS (The Down East Funk Syndicate)	Page 6
Local News Project Update	Page 7
Volunteer Profile	Page 8

Salt Air Standards:

Listener Letters	Page 2
Full Circle Fair Preview	Page 11
WERU Underwriters	Page 12
Music Charts	Page 13
Business Members	Page 14
Descriptions of Local Public Affairs Programming	Page 15
Programing Schedule	Page 16

Community Radio WERU

The mission
of Community Radio WERU:

- to provide a community based non-commercial radio service for the people living in the areas covered by WERU’s signal;
- to broadcast programs designed to serve the needs of those not currently served by other broadcast media;
- to be a “voice of many voices” offering a wide variety of people an opportunity to share their experiences, concerns, and perspectives with their neighbors over the WERU airwaves.

Board of Directors

WERU-FM is licensed to Salt Pond Community Broadcasting, a non-profit corporation actively run by an all-volunteer board of directors from the community that WERU serves. Board of Director meetings, as well as other various governance committee meetings, are open to the public. The current board members are:

Chuck Ausherman	Trenton
Karen Frangoulis	Blue Hill
Allison Gladstone, Vol Rep & Secretary	Blue Hill
Tom Kemp, Volunteer Rep.	Sangerville
Chuck Markowitz	Appleton
Heather Martin-Zboray, Vice President	Surry
Matt Murphy, ex officio	Ellsworth
Susan Pierce	Northport
Greg Rossel, President	Troy
Kathleen Rybarz	Ellsworth
Lynn Soucy, Treasurer	Holden

Operations Staff

Heather Candon	Production Manager
Bruce Clark	Contract Engineer
Joan Federman	Office Manager
Denis Howard	Development Director
Joel Mann	Program Director
Matt Murphy	General Manager
Bob Myers	Finance Manager
Maggie Overton	Music Director
Sammy Riegel	Underwriting & Salt Air Manager

Volunteer Music
Department

John Babcock	Blues Music Director
Patrick J	AAA Music Director
Karen Larsen	New Age Music Director
Karen McDonald	Database Manager
Dave Piszcz & Byron Greatorex	Jazz Music Directors

WERU-FM broadcasts from the top of Blue Hill Mountain in the town of Blue Hill at 89.9 FM and with a translator broadcasting from Bangor at 102.9 FM. WERU is a member of Maine Association of Broadcasters, Maine Association of Nonprofits, National Federation of Community Broadcasters, and the Grassroots Radio Coalition.

Correspondence is welcome:
WERU-FM,
PO Box 170,
East Orland, ME 04431
Office: (207) 469-6600
Studio: (207) 469-0500
Fax (207)469-8961
E-mail: info@weru.org
Webpage: www.weru.org

WERU does not discriminate based on gender, ethnicity, disability, or sexual orientation. WERU is an equal opportunity employer and complies with the Americans with Disabilities Act.

Active Volunteers

(Programmers, Producers & Lots More)	
Paul Anderson	Linda Keady
Chuck Ausherman	Mary Kellett
Dan Avenir	Tom Kemp
John Babcock	Rick Kidson
Jim Bahoosh	Paul Kisseloff
Dusty Bailey	Erik Klausmeyer
Phil Bailey	Karen Larsen
Matt Baya	Bonnie Lateiner
Judy Beach	Bob LeVangie
Ron Beard	Lysa Levin
Heather Bowman	Jane Livingston
Al Bourgoin	Ann Luther
Hillary Braun	Karen MacDonald
Amy Browne	Roland Magnan
Andy Buckley	David Manski
Jim Campbell	Chuck Markowitz
Rich Carlson	Lisa Martin
Jane & Rick Clarke	Marge May
Alan Clemence	Rob McCall
Susan Cockrell	Cathy Melio
Susan Connery	Deb Melnikas
Chriss Covert	Kim Mitchell
Brendan Curran	Jonathan Mohr
Abigail Curtis	William “Doc” Morril
Darwin Davidson	Charlie Oldham
Chevy Davis	Maggie & Michael
Charlie Defour	Overton
Meredith DeFrancesco	Gray Parrot
Denise Dinsmore	Barbara Peppey
Royce Dixon	Jay Peterson
Karen Doherty	Dave Piszcz
Mike & Pauline Domrad	Ric Pomilia
Meaghan Duffy	Joe Porada
Mark Dyer	Chris Poulin
The Ellis Family	Bill Pratt
R.W. Estella	Kathie Pratt
Emma Finn	Joel Raymond
Jim Fisher	Lucia Robinson
Haydee Foreman	Anne Romans
Gerald Forrest Jr.	Greg Rossel
George & Pat Fowler	Kathleen Rybarz
Karen Frangoulis	Tom Salisbury
Jim Freeman	Steve Savage
Don Furth, emeritus	John Skinner
Allison Gladstone	Cynthia Smith
Winnie “Ma” Gomm	Greg Smith
Paula Greatorex	Sylvia Smith
Byron Greatorex	David J. Snyder
Ayola Green	Stephen Soucy
Ralph Grimes	Alan Sprague
Ken Gross	Jeri Spurling
Jane Haskell	Vijaya Stevenson
John Hillman-Waters	Christian Sulick
Patrick J.	Cynthia Swan
Cathy Jacobs	Peri Tobin
Bela Johnson	Jen Tyne
Carlton Johnson	Harry Vinal
Renee Johnson	Parker Waite
Magnus Johnstone	Norm & Elissa Walsh
Mike Joyce	Linda Washburn
Jerry & Jacqui Kaufman	Holbrook Williams

Community
Advisory Panel

The Community Advisory Panel seeks new members. The CAP is an independent group whose purpose is to assess whether WERU is meeting community needs with its programming. If you’re interested, please call 469-6600 for more information.

Salt Air

- Published:** 3 times annually by the staff and volunteers of WERU
- Printed:** on recycled-content paper using soy-based ink by *The Ellsworth American*
- Mailed:** directly to all WERU members
- Distributed:** throughout the listening area to local businesses by volunteers and staff

Email WERU

- Comments & Questions:** info@weru.org
- Development & WERU Events:** denis@weru.org
- Salt Air & Business Support:** sammy@weru.org
- Community Events for the On-Air Community Calendar:** info@weru.org (Attn: Joan)



Letters
from WERU
Listeners

“Whenever I’m in the Blue Hill area, I listen to The Groove Shop with Holbrook Williams and Parker Waite. When at home in Cambridge, MA, I wish I could listen to WERU via webcast. To help support future webcasting and to support the general operations and diverse range of other fine programming on WERU, including Free Speech Radio News and Democracy Now!, I’m enclosing a contribution...”
- Cambridge, MA

“Thanks for the opportunity to share our excitement about watersheds with your listeners. WERU has been a real asset to the Union River Watershed Coalition in trying to connect with the public. I’m very grateful that this resource...is available for community organizations.”
- Bar Harbor, ME

“I’m delighted that you’ve begun archiving some of your locally produced programming for internet access and have invited comment on the possibility of expanding this service. I would particularly like to have access to archives of Rob McCall’s wonderful weekly ‘Awanadjo Almanac,’ either in audio or text transcript form... I live on the fringes of your signal, so it’s not always possible for me to pick up your programming off the air. For this reason, it’s particularly gratifying to be able to access some of your programming on the web. Thank you also for the many links you’ve already provided on your website to enable me to access some of your programming that’s not locally produced.”
- From somewhere on the fringes of the WERU signal

***Note:** WERU is working to expand and improve it’s website. Check it out at weru.org. We are also working to begin webcasting. We’ll let you know when we’re sending out music and public affairs over the internet to our fringe areas and beyond! We also have plans to work with Rob McCall to have transcripts of the Awanadjo Almanac on the website. You’re welcome to send more comments about the website to sammy@weru.org.

Please send questions & comments about *Salt Air* to:
Salt Air Comments
PO Box 170
East Orland, ME 04431
or email sammy@weru.org



Many Thanks to David Merrill for donating his original art for the cover of this issue of *Salt Air*!

Business Membership
If you are interested in WERU Business Membership, please call 469-6600 and ask to speak with Sammy.

Programming Notes

By Samantha Riegel,
WERU Underwriting & Publications Manager

WERU's program schedule hasn't changed much over the winter, but change seems to come with spring. WERU now has a few important changes to announce. There are two new Morning Maine short features, one long-time volunteer programmer has left, and another long-time volunteer has returned!

WERU's newest short features are Healthy Tips and EarthSense.

Healthy Tips airs weekly on Tuesday morning at 7:30. Cynthia Swan is the producer of both Healthy Tips and Healthy Options (an hour long program on the third Wednesday of the month). When asked why she decided to volunteer her time to produce these programs, Cynthia responded, "I came to the realization that I wanted to be a voice for the things that I am passionate about: health & wellness."

With Healthy Tips, Cynthia explores with listeners the various aspects and realms of health and well-being for humans and the planet.

EarthSense also addresses the health of humans and the planet, but with a different twist. Volunteer producer, Phil Bailey, shares with listeners information about environmental issues. In his words, "From From 'green' cars to greenwashing, Earth Sense investigates and brings practical solutions to environmental issues." Tune in Wednesdays at 7:30 AM to catch Phil's newest commentary.

A warm WERU welcome goes out to both Cynthia Swan and Phil Bailey!

We must also say a farewell to a well-loved, long-time volunteer, Cynthia Smith. Cynthia hosted WomenFolk starting in 1996, and her last show was on March, 30th, 2004.

Joel Mann, the station's Program Director, had the following to share about Cynthia:

"The first time I heard Cynthia Smith on WERU, I had to sit down. Who was this programmer who sounded so real, so animated, so scared? It must have been her

very first time on the air back in 1996. I couldn't wait to meet the face behind that voice.

Cynthia loves music and her community, that's what brought her to WERU-FM. Over the years, she has been involved at the station



Cynthia Smith at the mic, during her farewell edition of

in many behind the scenes efforts as well as an "On Air" programmer. At one time, she was even producing Voices.

I love what she did with the WomenFolk; her own poetry that she started each show with and the music she chose to play. Always one to explore new music, she took her show from folk music by women to Womenfolk who perform all genres of music. And how she prepared for her shows... Cynthia put so much into her themes (like playing all black women musicians during February) and special celebrations (like her all Joni Mitchell shows during pledge drives), and she always had a blast doing it.

She helped me in so many ways, thinking about the station first and herself second. She never carried an ego and has always been friendly and loving and kind.

Cynthia is moving to New York state to be with her family, and she has hinted that she may get involved with a community radio station located where her new home will be. What a lucky station! We here at WERU wish her all the best in her journey.

If you ever heard her on WERU, I'm certain you will miss her as much as we will. Thank you, Cynthia."

With Cynthia leaving, WERU was left with a significant space in our program schedule, and another long-time volunteer has returned to fill that space with a different kind of music program. Haydee Foreman hosted Planet Dance on Saturdays for 10 years, and last November decided to sub on various shows instead. Now she has returned "full-time" to fill the space with the Blues, the Bourgeois Blues to be precise.

Haydee describes her new show as, "African American influenced folk music from acoustic-roots blues to gospel, spirituals and civil rights traditions. Think Odetta, Lead Belly, Tracy Chapman, Eva Cassidy, Sweet Honey & the Rock, Toshi Regan, Mississippi John Hurt, and more!"

You can tune in from 9:00 to 10:00 AM on Tuesdays to hear the Bourgeois Blues.

I have two more quick notes about Programming at WERU. Sometime this past winter, one of the programming trio of the late-night program, Northern Journeys, decided to stay until Sunrise Service begins on Wednesday morning. Melisenda Ellis is now hosting her program, Insomniac's Mix every early Wednesday morning from 2:00 AM to 5:00 AM. If you're looking for a real late night / early morning music program that's interesting and full of various genres, check out Insomniac's Mix!

Finally in programming news, WERU recently had our Volunteer Orientation gatherings and welcomed more friendly faces into the volunteer training program. As this group of enthusiastic, community-minded people goes through the training, we all look forward to what these new volunteers will offer the WERU community! Stay tuned!



**All Kinds of Music...
For All Kinds of People!**



- ♦ CDs, Tapes, Records (LPs & 45s)
- ♦ We sell turntables.
- ♦ We buy used CDs, LPs, & cassettes.
- ♦ Try it before you buy it!
- ♦ Special orders are welcome.

♦ JAZZ ♦ FOLK ♦ BLUES ♦
ROCK ♦ HIP-HOP ♦ TECHNO ♦
WORLD ♦ NEW AGE ♦ CLASSICAL ♦ MAINE ARTISTS ♦

Wild Rufus Records
7 Public Landing Camden, ME 04843
207-236-2263 www.wildrufus.com



hyperMedia

your internet

Where Customer Service is a Priority
We Take Care of Our Flock!

98% of our Customers Surveyed would recommend
☐ hyperMedia to a friend or relative ☐

STATEWIDE TOLL FREE ACCESS WEB SITE DESIGN & HOSTING
E-COMMERCE FOR BUSINESS

1-800-935-0040 www.hypernet.com
Maine Based - Family Owned - Since 1994

Jazz Review

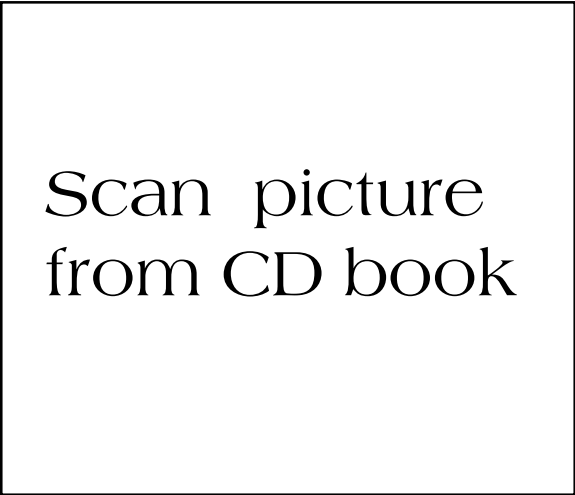
by Radio Jones,
Co-Host of *Jazz Plus*

It has been some time since I've written for this esteemed publication, so I was just tickled pink when asked to contribute some of my deathless prose once again.



One of the most interesting albums to come across my jazz DJ earwaves in recent times is *In What Language?* from pianist Vijay Iyer and rap lyricist Mike Ladd. The recording is an impressionistic mix of spoken word, jazz, hip-hop and electronica, sometimes playful, at other times downright stark and sobering. *In What Language?* was originally performed with visuals accompanying live musicians and actors on stage. The pieces feature monologues by characters whose lives revolve around the activities of an international airport. It could be anywhere, but sounds a lot like New York. The title track comes from the experience of Iranian film maker Jafar Panahi who was detained in transit between Hong Kong and Buenos Aires in April of 2001. He was unaware that Iranians, being citizens of the 'axis of evil' were required to possess transit visas in the U.S. He was detained by INS, handcuffed and shackled to a bench and then deported, in cuffs, back to

Hong Kong. After the event, he wrote of his humiliation and his inability to communicate with the various international travelers who looked askance at the man chained to his seat. "I'm not a thief! I'm not a murderer! I am just an Iranian,



a film maker. But how could I tell them? In what language?" Panahi wrote. In the service of journalistic integrity, let me note that I hate to fly and have done so just a handful of times in my life, so my knowledge of airports is limited, but it seems to me they are everywhere and nowhere all at the same time. Travelers from all corners of the planet pass each other in great numbers and in relative anonymity. *In What Language?* is a series of vignettes, comparable to one's fleeting impressions upon being herded through a great metropolitan airport, hearing snatches of

conversation, gazing momentarily at passing faces, in an ever-shifting kaleidoscope. We hear from people, mostly of color, who service the vast, impersonal maw of the modern international airport. Security guards, cabdrivers, the Indian guy running the magazine shop, smugglers, refugees and hustlers all interact in this universal airport scenario. The pieces run the gamut from somewhat playful (*Security*) to downright chilling (*Asylum*) to the romantic, post 9-11 piece *Taking Back the Airplanes*, which describes a night time rooftop scene in which passing aircraft don't conjure nightmare images of destruction. Iyer and Ladd have expanded the relationship between jazz and the spoken word (Ellington, Keroac, Lord Buckley) in a most intriguing and 21st century manner with *In What Language?* The 11-piece ensemble features Iyer at the piano, Liberty Ellman on guitar, Rudresh Mahanthappa on saxophone, Ambrose Akinmusire on trumpet, Dana Leong on cello and trombone, Stephan Crump on bass and Trevor Holder on drums, along with poet Latashia Diggs, actors Ajay Naidu and Allison Easter and Mike Ladd on the spoken-word portions of the album. It's worth the audio trip through the airport of your imagination. *In What Language?* is available from PI Records.



Smith & May
Masonry
- hard copy

Roberta
Kuriloff

- hard copy (minus
free statement at
bottom of ad

Ernie Hawkins

» Hawkins has been building his reputation as one of the (perhaps the) finest purveyors of solo acoustic blues guitar playing in the world. **David Little Maine Blues Society**

» Every Hawkins performance, live or recorded, achieves perfection balancing his passionate love of pre-war acoustic blues and honest songwriting. **Art Tipaldi, Senior Writer Blues Revue**

» His deep tones are so laid-back, back-porch growly, you'd swear you were in the Texas hills. **Dirty Linen**

CDs

Mean Little Poodle
Bluesified
Blues Advice
A Celtic Christmas

INSTRUCTIONAL VIDEOS

Rev. Gary Davis
Lightnin' Hopkins
Blind Willie McTell
Mance Lipscomb

July
3 Deertrees Theater, Harrison
6 LA Arts, Auburn
17 Chocolate Church, Bath

Future dates TBA at

www.ErnieHawkins.com

Pyramid Studios -
hard copy

Youth Radio Update

by Heather Candon,
WERU Production Manager

In January, they examined the history of body modification, and focused on tattoo art and body piercing. In February, they wanted to know if America's youth were being overmedicated. They cited increasing numbers of children and teens taking psychoactive and mood-altering drugs, as prescribed by doctors or recommended by school officials. In March, they sought to explore the ways in which our society defines marriage, and they made a case for gay marriage. In April, they talked about feminism, homeschooling, unschooling, "Schools That Do Too Much", and siblings in Iraq.

They are the teens who, each month, put together *The Teen Talk show*. If you haven't had a chance to tune in to this program yet, make sure to keep your radio on during the second Monday of each month at 6pm. Here's a run down of the people you hear when you tune into *The Teen Talk Show*.

- Brianna Alley

Eighth grade, homeschooled
- Nick Alley

Sophomore, Sumner High School
- Theresa Dziezyk

Senior, Mount Desert Island High School
- Nikki Gordon

Junior, George Stevens Academy
- Brandon Moore

Senior, The Liberty School
- Ariel Porada

Eighth grade, Conner School
- Abby Stivers

Senior, Mount Desert Island High School
We will continue to bring *The Teen Talk*

Show to the WERU listening audience throughout the summer, and will be welcoming MDI H.S. student Marni Berger to the ranks of producer and host for *The Teen Talk Show*. Marni will be training under the tutelage of Abby Stivers, the supremely capable host of many a *Teen Talk Show*.

The Teen Talk Show continues to hold true to its mission of youth empowerment through direct media access. If you know of any teens who may be interested in getting involved either on-air or behind the scenes, please contact Heather Candon at WERU FM by calling 469-6600 during weekday business hours or by e-mailing her at heather@weru.org.



The DFS

By Magnus Johnstone,
WERU Programmer of *The Matrix*

"I'm kinda tired of this foreign pillaging policy business. Killing so we can win this next commission for Haliburton. Operation 'ffhihht! ', killing Iraqi civilians. we're really fighting for Freedom, a contradiction perhaps, but we believe nothing says "peace" like a cap in your ass." - Gabe Weiss of The Down East Funk Syndicate

The Down East Funk Syndicate are not fooling around. The four Blue Hill peninsula High School seniors have formed a rap group and are "spittin" some seriously sophisticated lyrics.

They are not imitating the popular rap on the radio. The only concession to the "gangsta" style coming out of the urban ghetto in the above is a defiant attitude and the phrase "a cap in your ass", slang for a shooting.

"Yep, that old chestnut, biogenetic Cessnas

the pressure is growing as hate and loathing festers.
Messed up, fed up, civilians swelling, plotting rebellion.
That will no doubt lead to corporate greed and mindless killing.
Forces conflicting and resisting real life.
Only internal transformation leads you into the light." - Sam D. Koch

Flipping from political to inner space, Sam



From Left to Right:
Gabe Weiss, Sam Kestenbaum,
Sam D. Koch, & Brendan Murray

Koch casually refers to the current world dread, then skips to the personal with deceptively deft wordplay.

"My third eye's gouged out on some mismatched Oedipus sh-.
I think I got what Daedalus missed.
Commercial grade laser kid with my eyes made for razor slits
Collaborating with the spirits of ancestors and clones,
I go beyond and below the sub conscience."
- Brendan Murray

When the Syndicate first walked into WERU, I was curious to hear what Down East rap might sound like. Back in Boston I did a rap show for 3 years and had many of Roxbury, Mattapan, Cambridge, etc.'s best rap groups perform live on the radio. Many groups sent me their basement tapes which were sometimes, but not always, good. With a few exceptions, all of these kids were black and from the

Don Foshay's

Discount Tire

& Alignment

Cooper

TIRES

• Full Service Mechanical Shop

• All Wheel Computerized Alignment

• 4 Bays for Convenient Service

Route One, Camden

230-0011

M-F 7:30am-5pm,

Sat 8am-2pm

....Be glad they became tire guys, the best in the business!

The North Atlantic Blues Festival

July 10 & 11, 2004

SATURDAY

Blind Albert Blues Band 11:00- 11:30

Sherman Robertson 11:45- 12:45

Cephas & Wiggins 1:00- 2:00

E.G. Kight 2:15- 3:15

Mark Hummel's Blues Harmonica Blowout with Paul Delay and Billy Branch 3:30-4:45

Bobby Blue Bland 5:00- 6:15

Rain or Shine!

No Pets or Coolers!

No Video Recording!

No Sun Umbrella's!

Bring a Blanket/Lawnchair!

207-593-1189

SUNDAY

Steve Bailey Band 11:00- 11:30

Ana Popovic 11:45- 12:45

Kenny"Blues Boss" Wayne 1:00- 2:00

Michael Burks 2:15- 3:15

Bettye Lavette 3:30- 4:30

Taj Mahal & The Hula Blues 4:45- 6:00

Advance tickets \$25.00 per day or weekend ticket \$40.00.

Tickets at the gate per day \$30.00 or weekend ticket \$60.00

www.northatlanticbluesfestival.com

ghetto. Their lyrics were usually somewhat imitative, but rap was just beginning then, and carving out an identity for itself.

Since then the form has evolved and become more complex, but nothing prepared me for the fierceness of “The DFS”.

I almost fell on the floor with delight at the references to Classical Mythology, Haliburton, personal transformation etc. These guys have some juice.

Their dj, Sam Kestenbaum, otherwise known as “Funkmaster D-Spot, provides their “beats”.

Watch out for them.



Local News Project Update

by Ron Beard, WERU host of Various WERU Local Public Affairs Programs

“We want ‘news we can use.’” That’s what WERU has heard from listeners and community members in focus groups held this winter in Blue Hill, Bucksport, Ellsworth, Bangor, Belfast and Rockland. The focus groups were part of a six-month feasibility study to determine content and format of potential ways to increase local news reporting on WERU. Funded by the Corporation for Public Broadcasting, the project is allowing a project team to learn from listeners, volunteers and staff what they would find valuable and useful to add to existing news and public affairs programming at the station.

Participants in the focus groups identified gaps in other broadcast news within the WERU listening area. One

example: hearing people speak in their own voices about the issues and events that they are facing, including how national and statewide issues are affecting people locally. These “voices” and the context that is often provided when reporters “investigate” a story, going beyond headlines and sound-bites, are at the heart of what listeners said they wanted.

The focus groups also posed the question about the qualities listeners want in the people who are collecting, producing and reporting local news. There was consensus in the responses: fairness, accuracy, operating from a base of knowledge about the issues being reported, and providing a variety of news that cause people to think, but not telling them “what to think.” In other words, listeners would want reporters and news producers to have the training and support to offer news that adheres to standards of good journalism and the spirit of Community Radio (as exemplified by our many fine local public affairs interview and call-in programs).

The local news project consists of several parts. Focus groups and surveys in *Salt Air* and at www.weru.org were part of collecting information from listeners, stakeholders and possible collaborators in gathering and reporting local news. That information, along with a summary of “best practices” from other community radio stations that utilize volunteers to gather and report news, was summarized and forwarded to a study circle of 11 people: community members, current WERU volunteers and staff and a WERU board member. (Study circles were also used in the recent Common Health project, reported elsewhere in this edition of *Salt Air*.)

As the study circle began its work, General Manager Matt Murphy set some “givens” about any expanded news service: there would not be any dramatic change in the overall balance of music and public affairs/news during the broadcast day (at least not in the near future, as that issue was discussed at length publicly last year with no clear consensus or majority emerging in favor of changing the current balance); there is no money budgeted

Bela Johnson, Medical Intuitive

THERE IS NO SEPARATION BETWEEN BODY AND MIND, SOUL AND SPIRIT.

Consultations and healing facilitation
in person or by phone. Call 207-843-5414
email belaj@midmaine.com
or visit www.belajohnson.com

Merle B.
Grindle
- hard copy

Pro Libris -
ReScan &
Edit!!

The Sand
Castle
- hard copy

2004 FULL CIRCLE FAIR
VENDOR
APPLICATIONS
NOW AVAILABLE!

FCF LOGO
to be
scanned

Call WERU at 469-6600 during
weekday business hours.
Also, soon to be available
online at weru.org!

RadioActive

Covering News &
Events that Matter to Com-
munities in Midcoast &
Downeast Maine

RadioActive is a grassroots
environmental and social justice
news journal hosted by Amy
Browne and Meredith DeFrancesco.

To hear RadioActive,
tune into WERU on Thursdays
from 4:00 - 4:30 pm.

You can contact *RadioActive* by
emailing
radioactive@maineindymedia.org,
calling WERU at 207-469-6600 and
leaving a message, or faxing 207-469-
8961. You can also listen to
RadioActive archives at [http://
free.freepress.org/ran/](http://free.freepress.org/ran/).

Bangor
Savings
- hard
copy

Continued from Local News
Project Update on Page 7

Draft design principles for local news at WERU:

- The news service should be grounded in a strong “database” of community people who can suggest story ideas and serve as sources of local news, and who will give constructive feedback on the quality of the news service.
- Any news service will build our volunteer and staff capacity; we would start by expanding & coordinating what we do now, using an incremental approach over time: trying something, evaluating it and building on the experience.
- We would want our expanded news service to include both coverage of special events and emergencies, as well as ongoing local news from communities throughout our listening area (and within topical or issue “beats” covered by volunteers).
- The station needs to establish a clear “news guiding and deciding” function, a single point of coordination for volunteers who would be gathering and producing news, and possibly a “News Advisory Committee.”
- WERU would need to set up an excellent training and support process for those volunteers (and staff) who are gathering and producing news, including clear expectations around the ethics of journalism.
- A good local news service would depend on a dedicated production studio and equipment for use by volunteers (modestly expanding current station facilities).
- WERU can begin expanding its local news service first by raising listener awareness about what we are already doing in the news and public affairs arena, by coordinating how we promote programs in advance and making more of our excellent, local public affairs programs available online as audio archives
- Any local news service must rely on ongoing listener feedback for review and improvement, including using the Program Advisory Committee to recommend formal changes.

for an expansion of news production or for staffing during the remainder of 2004; and that any expanded news service would have to adhere to the WERU mission.

Working with members of the project team (Jim Campbell, Matt Murphy, Renee Johnson and Ron Beard) the study circle participants suggested some basic “design principles” and format ideas for a pilot local news effort (to compliment existing public affairs programming).

Along with design principles, study circle participants made suggestions to the project team for places and formats where news might best fit during the broadcast week. By June, the team will draft a comprehensive model of incremental expanded local news programming including suggested news beats and formats, training materials for volunteers and staff, and other procedures as the foundation for a news service. Members of the recent study circle and others, including WERU volunteer producers/programmers and community members with journalism experience, will be invited to review the draft materials with an eye for improvements prior to any pilot local short news features airing over the summer and fall. Study circle members also said that they wanted a clear time frame for piloting any expanded news service, and an evaluation process that would allow the station to keep quality high, to assure that what we are doing is sustainable and true to the station’s mission.

The project results, including the design of the focus groups, the study circle guide and design principles, along with the eventual local news service model and volunteer training materials, will be made available to other rural community radio stations by the Corporation for Public Broadcasting and through networks like the National Federation of Community Broadcasters (NFCB).

The grant is allowing some members of the project staff, WERU staff, study circle participants and volunteer news producers to attend the April NFCB conference to share the project process and results so far, and to

get feedback from other community radio stations.

Ron Beard, of University of Maine Cooperative Extension and a member of the Local News Project Team, wrote this summary and serves as a project ombudsman. Contact him if you have questions, suggestions or concerns about the project. He can be reached via rbeard@umext.maine.edu or by calling 207-667-8212.



Volunteer Profile:
Jane Clarke

Host of *The Doll House*,
8 -10 PM Fridays

By Abigail Curtis,
Volunteer *Salt Air* Contributing Writer

Jane Clarke, DJ for WERU’s delightfully different 80s show, *The Dollhouse*, does not schlump to the station in any old rag she has lying around. No, Clarke—who is also an actor and playwright—dresses for the part, donning an elegant black dress and dangly silver jewelry for her show’s March Pledge Drive edition. With her black hair and dramatic makeup, Clarke cut a slightly Gothic, exotic figure as she darted around the station to find the esoteric requests that listeners phoned in. She and her *Dollhouse* are like an edgy night to the ordinary day of mainstream radio’s repetitive 80s shows. And she wouldn’t have it any other way.

“Saturday night is 80s night on all the stations. But they play pretty standard stuff. I’m not too threatened,” said Clarke.

Gain exposure
for your business
and support
WERU at the
same time!

You could
underwrite one of
WERU's daytime
programs for the
summer (3 months)
for \$180.

Or an evening
program for \$135.

Find out more at
www.weru.org
or call Sammy at
469-6600 during
weekday business
hours.

Flye
Point
Festival -
PDF

Clarke has been doing *The Dollhouse* for about three years now, and describes it most accurately as an 80s-based program. “We play 80s music or other decade work by 80s artists, or anything else that can be tied to the 80s one way or another—preferably New Wave or alternative music.” On WERU’s Program Schedule, *The Dollhouse* is described as “All Things 80s.”

“That’s not entirely accurate,” she said, smiling. “It should say, ‘All things 80s that don’t suck,’ or ‘all good things 80s.’”

The strongest proof of this is that Def Leppard has been banned from *The Dollhouse*. But before fans feel too offended, they should understand that just about any heavy metal band will not get played.

“Or anything by the Grateful Dead,” Clarke said, “So stop trying.”

Clarke is, however, glad to take listener requests, though she asks that callers keep their phone calls short, because 80s songs tend to be brief and she needs to attend to her DJ duties. She is especially glad to take requests during WERU’s pledge drives.

“If we’re asking them for money, the least we can do is play the songs people ask for,” she said.

She also gets lots of calls during her thrice-yearly “cheesy smash hits” show, and during occasional on-air surveys for 80s information.

“Last week I asked listeners to call and let me know what their favorite 80s shows were. I heard *21 Jump Street*, *Knight Rider*, *Max Headroom*, *MacGyver*, *A-Team*, *Buck Rogers*, *Friday the 13th*, and *Radio 1999*.”

Generally, Clarke decides in advance what the theme of that night’s show will be.

“I usually try to say up front this is going to be a dance-y show, or a Gothic show, or a cheesy smash hit show. I know I have listeners who will check in at the beginning and will listen if they like it.”

And many do. *The Dollhouse*, which is notable for its eclectic and fun spirit, was singled out by *Esquire* Magazine last summer as a “killer 80s show.” The magazine had listed WERU as one of the nation’s top radio stations. Clarke was taken aback by the attention.

“I felt baffled, and surprised. And, you know, I also felt a bit happy and proud. I also felt sort of bad.

Because I think that a lot of DJs know more, and put more time and effort, and should be recognized,” she said. “I am not the 80s goddess. I do not know everything about the 80s. At all. I certainly have more knowledge than the average Joe. And I am learning as I

go,” she said.
But Clarke is no 80s novice. Much of her show’s success is due to her passion for, and knowledge of, that decade’s music.

“1983-84 was my musical awakening,” she said. “I grew up in Ellsworth and listened to a lot of WTOS, before they switched to heavy metal. It was great. So insanely great. They had a Sunday night jazz program, they played all kinds of 12-inch singles, all the New


Picture of
Jane - Need
to scan!!

Wave, and really off-beat songs and bands.”
Clarke, who has such happy memories of that WTOS, also remembers the sadness she and other listeners across Maine felt when the station changed management and formatting sometime in 1987 or 1988. The alternative songs stopped playing, and the loud metal music began. Fans held a mock funeral for their beloved radio station. They walked slowly down the streets of Skowhegan holding up a fake coffin, she said.
The demise of WTOS strongly affected Clarke, and may be why she so enjoys sharing her knowledge of alternative 80s music with WERU fans.

Clarke is precise about the relative merits of music from each year in the 80s. 1980 to 1982 were very good years. At that time, said Clarke, there was either “scary” top 40, or good alternative music, but it was very divided.
“The good stuff was under the Top 40 garbage,” she said. “And I think that they started to balance out more. Duran Duran came to the forefront. Howard Jones came to the forefront. He’s a phenomenal keyboardist, like Herbie Hancock.”

And things were even better during the late New Wave years of 1983 to 1985.
“By the time ‘83 and ‘84 rolled around, the alternative bands started to take over the video scene,” Clarke

Belfast
Dance
Studio
- hard copy

 **Morning
Maine**
Monday – Friday
6:00 - 9:00 A.M.

Wake up to
Morning Maine
every weekday morning!

If you tune in, you’ll hear...

The Best Americana Music
All Morning Long

(Folk, Blues, Country, Roots Bluegrass, Tex-Mex, Gospel, Zydeco-Cajun,
Celtic & Folk Rock)

Local & National
Informational Features

(National Native News 6:30
BBC News 6:00, 7:00 & 8:00
Local Features 7:30
Hightower Radio 8:30)
Hardworking,

Community-loving Hosts!

Alison Gladstone (Monday)
Joe Porada (Tuesday)
John Waters (Wednesday)
Karen Frangoulis (Thursday)
Joel Mann & Denis Howard (Friday)

Window
Panels
- hard copy

H.O.P.E.
Magazine
- hard copy

said.

1986 and 1987 had a little bit of a different feel —music was a little less keyboard-driven and a little more drum-oriented, according to Clarke.

“Now, ‘88 and ‘89—crap. Paula Abdul, Janet Jackson, Bobby Brown. All that dance/rap stuff,” sniffed Clarke dismissively.

Her love of music was, perhaps, increased by a difficult time at Ellsworth High School.

“I had a really hard high school experience. I just kind of hung out and listened to a lot of music. I watched a lot of MTV. And then there’s Live Aid. That was the event of the 80s for me.”

Clarke’s exposure to massive amounts of music have inoculated her against the “crap” of the 80s, and also given her the ability to know instantly if she likes a song or not. It’s a skill that she thinks she has passed down to her nearly five-year old son, Shilo, along with a precocious taste for good music.

“‘Tainted Love’ was Shilo’s first official song. He would dance around his crib to that when he was eight months old. And ‘Mr. Roboto’ was a really big hit when he was one-and-a-half years old. I made him a special tape with all his favorites—it has Bloodhound Gang, Men Without Hats, ‘Da Da Da’, ‘Centerfold’, and ‘Night Fever’. He liked that a lot.”

Shilo also has the good taste to appreciate WERU.

“I always keep a picture of him in the studio with me. Shilo loves the radio station, by the way. He loves it there,” Clarke said.

He’s not the only one.


“I think WERU is great. I love it. I wish I were more involved. And all the good things I say in the pledge drive are true,” Clarke said. “I only say the things I believe in.”



Would you like to know more about a business that supports WERU?

All of WERU's business members and underwriters are listed on pages 12 and 14.

For more information about a particular business, please call Sammy at 469-6600 or email sammy@weru.org !



Common Health Update: What Does Good Health Care Sound Like?

By Ron Beard,
Co-Host of *Common Health* (among other WERU local public affairs program!)

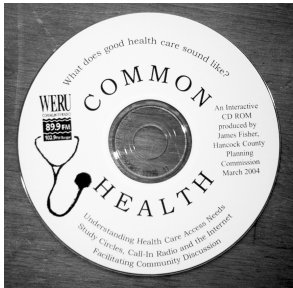
While *Common Health* continues as a radio program in WERU’s public affairs line up (airing live on the third Wednesday of each month from 10-11 a.m.) the project that launched the series has formally ended with a multi-media final report sent off to funders and policy makers in early April.

WERU received a total of \$94,000 over two years in support of the project, including support from the Maine Health Access Foundation, Sound Partners for Community Health (a project of the Benton Foundation, with support from the Robert Wood Johnson Foundation) and from local partner organizations.

The project consisted of 12 monthly radio broadcasts, featuring the voices and views of consumers, health care providers and policy makers focused on how Maine can expand the quality of and access to health care. “Because the project paralleled introduction, debate and passage of Governor Baldacci’s Dirigo Health program and the beginning stages of implementation, WERU and its listeners benefited from having a first-hand view of the issues and the policy proposals,” said WERU General Manager Matt Murphy.

The project also drew on the experience of four partner organizations in the project: The Healthy Peninsula Project of Blue Hill Memorial Hospital, the Hancock County Planning Commission, University of Maine Cooperative Extension and the Study Circles Resource Center.

Through a series of study circles in Gouldsboro, Stonington, Ellsworth, Unity and Bangor, participants learned about the health status of their communities, something about the health care and insurance system and about basic policy alternatives. Included in the alternatives was coverage for all citizens, as envisioned in the



Dirigo Health Plan, and payment for health care through a single payer, which has been studied by Maine’s Health Security Board, as championed by former area legislator Paul Volenik, of Brooklin.

“Overall, study circle participants wanted to assure that everyone had access to good quality care, wanted to find ways to hold down costs,



Common Health is a live call-in program with guests, co-hosted by Ron Beard and Barbara Peppey.

and greatly simplify reimbursement procedures for consumers and providers,” said Jim Fisher, of the Hancock County Planning Commission (and principle author/compiler of the Common Health final report). “Those results confirm the direction that Maine seems to be taking with Dirigo.”

“When people with health insurance encountered people without insurance, they couldn’t very well look them in the eyes and say ‘you don’t deserve the health support I get.’ It became a ‘there but for the grace of God go I’ moment,” according to Barbara Peppey, of the Healthy Peninsula Project, who facilitated several of the study circles and serves as co-host and producer of the *Common Health* radio series.

“This project demonstrated our ability to manage a fairly complex project, with great community partners. The outcomes for the station and its listeners included high quality programming, our first experiment with on-line archiving those programs for listeners who couldn’t tune in when they first aired, and expanded use of our website for providing other informational resources to the community,” said Murphy.


The complete project report, including findings, the study circle guide and resource materials, as well as audio files of the radio programs is available at www.weru.org (click on “Common Health” on the left side of our home page).

Ron Beard of the University of Maine Cooperative Extension is co-producer and host of Common Health.



LIPPINCOTT BOOKS

36 Central Street Downtown Bangor
942-4398



30,000 used and rare books.
Agriculture, eastern philosophy, holistic health, Native American culture, progressive politics, music, art, literature, & history.
An eclectic multitude of subjects.

Blue Hill Peninsula
Karate - Hard Copy

Underwriter Profile: Center Harbor Sails, Brooklin

by Samantha Riegel, WERU's Publications
Manager and Jed Siebert, co-owner of Center
Harbor Sails

Center Harbor Sails has been underwriting
weather reports on Morning Maine for four years,
and WERU would like to thank everyone at
Center Harbor Sails for their generosity!

I contacted the owners of Center Harbor Sails,
Marti and Jed Seibert, and offered them a chance
to tell WERU what they offer at Center Harbor
Sails. I also asked why they like to underwrite
WERU programming. Here is their response:

"Center Harbor Sails was founded in Brooklin
over 20 years ago as a sail loft dedicated to
building traditional sails. All sails were designed
on the floor and finished by hand. We are still well
known for designing and making beautiful, hand
finished sails. We also design and build all types of
custom canvas, clean and repair sails, and offer
winter storage.

We have recently joined forces with Doyle
Sailmakers and have become Doyle Center



The staff at Center Harbor Sails

Harbor. We are now able to offer our customers
more types of sails from the most modern lami-
nated offshore racing sails through traditional
cruising sails to colorful dinghy sails (and even the
occasional model sail!)

We supply and maintain the sails for the
WoodenBoat fleet and are proud to work with
talented local boat builders such as Brooklin
BoatYard, Eric Dow, Doug Hylan, Jimmy Steele
and Brion Rieff. We are honored to fund the
scholarship program for the Brooklin Youth Sailing

Program.
We currently have 5 employees and listen to
WERU daily. To know us is to know that we all
have are extra large souls from listening to the
Extra Large Soul show every Thursday from
2:00-4:00 p.m. We also depend on WERU to
keep us current on international and local news.
We are pleased to underwrite the Morning
Weather Reports on Morning Maine so you'll
know whether you should call in sick and go
sailing!"
If you would like more information about
Center Harbor Sails or would like to stop by their
shop, here is the necessary information:

Where: Downtown Brooklin, Maine upstairs
from the Brooklin Marine Supply (in the old high
school) across from the Post Office
How to Get There: By car follow Coastal
Road 175 to Brooklin. If you get lost just ask the
nice folks at Brooklin General Store. If you come
by boat you should be able to pick up a mooring
down in Center Harbor, and the store is just a short
walk up the hill.
Store Hours: 8:30 to 4:30 Mon. - Fri.
Phone: 207-359-2003
Address: PO Box 32 Brooklin, Maine 04616



WERU's 2004 Full Circle Fair

Here's a sneek preview into who will be performing at this summer's fair!


From top left to right: Jud Caswell (folk singer-songwriter); Laurie Jones (rock);
Lousie Taylor (Americana folk); David Rovics (activist folk);
SONiA (folk/rock singer-songwriter); Harvey Reid & Joyce Anderson (folk);
Everard Dodge & Roseanna Rogers (Country); Devonsquare (folk rock);
David Mallett (Folk); plus more! Check weru.org for updates!

July 24th & 25th at the Blue Hill Farigrounds

HANDPRINTS REFLEXOLOGY

Michael MacDonald
Certified Reflexologist

Sessions in your home.



Therapy for Feet and Hands.
Improves Circulation.
Reduces Body Stress.

(207) 667-4831
Gift Certificates Available

Coyote Moon - SCAN


Arts & Africana



Fine Contemporary African Arts & Crafts

1428 Route 1,
Hancock Village
For gallery hours or appointment,
call 422-3300 or 422-9529.

DEBORAH PAGE



INTEGRATIVE SOMATIC THERAPY
& MOVEMENT EDUCATION

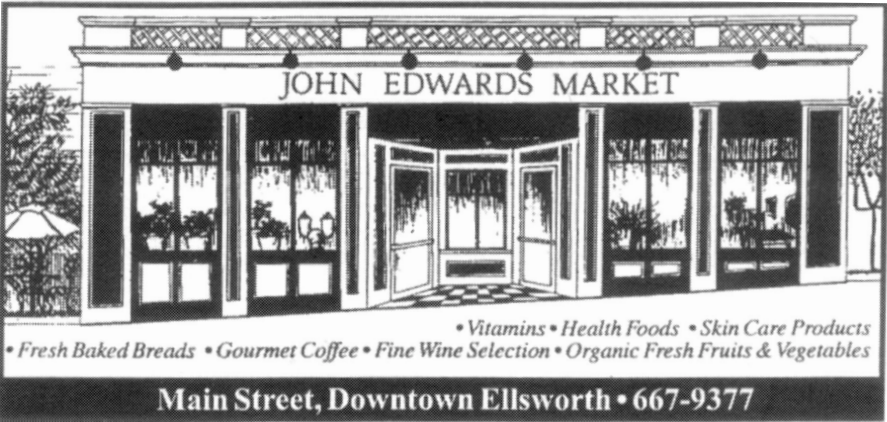
The Feldenkrais Method®
Craniosacral Therapy
Structural Bodywork & Massage

207 288.2340
triplespiral@acadia.net
13 Albert Meadow Lane
Bar Harbor, Maine 04609

WERU thanks all the local businesses & organizations that underwrite WERU programming!

For more information about WERU underwriters and business members, please contact Sammy at 469-6600 or sammy@weru.org.

- Abbe Museum, Bar Harbor, various programs
- The Acupuncture Clinic of Rhonda Feiman, Belfast, *Democracy Now!*
- Angle Tree Plumbing, Belmont, *BBC News*
- Artisan Builders, Monroe, *RadioActive*
- Asian World Imports, Blue Hill, various programs
- Bangor Savings Bank, Bangor, *Come Sunday*
- Bar Harbor Banking & Trust Co., *Morning Weather*
- Bay Chamber Concerts, Rockport, various programs
- Bayside Marine, Belfast, *Morning News & Weather; BoatTalk*
- Bayview Street Cinema, Camden, *On the Wing*
- Beech Hill Farm, Mount Desert, *Morning Maine*
- Belfast Framer & Gallery, Belfast, *The Barefoot Blues Hour*
- Blue Hill Co-Op & Cafe, Blue Hill, *Saturday Morning Coffeehouse*
- Boynton-McKay, Camden, *Sound Travels*
- The Camden Conference, various programs
- Cappy's Chowder House, Camden, *Saturday Morning Coffeehouse*
- Carmen Verandah, Bar Harbor, *This Way Out*
- Center Harbor Sails, Inc., Brooklin, *Morning Weather*
- Cleonice Mediterranean Bistro, Ellsworth, *Jazz Plus & Sound Travels*
- Coastal Drilling & Blasting, Ellsworth, *Teen Talk Show*
- Coastal Enterprises Incorporated, Wiscasset, *Local Public Affairs*
- Coyote Moon, Belfast, *Sound Travels & Sunday Morning Coffeehouse*
- Don Foshay's Discount Tire & Alignment, Biddeford, *On The Wing*
- Down East Aids Network (DEAN), Ellsworth, various programs
- Downeast Graphics, Ellsworth, *Morning Maine & The Groove Shop*
- Eden Rising, Bar Harbor, *Sound Travels*
- F. L. Davis & Co., Orland, *Mostly Manding*
- Face Magazine, Southwest Harbor, *On the Wing*
- Fahringer's Framing Gallery, Ellsworth, *X-Large Soul Show*
- First National Bank of Bar Harbor, various programs
- Fresh Off The Farm, Rockport, *Reggae Reprieve*
- The Good Table, Belfast, *In the Moment*
- The Green Store, Belfast, *Free Speech Radio News & Democracy Now!*
- Harbor Square Gallery, Rockland, *Democracy Now!*
- Havana, Bar Harbor, *Democracy Now!*
- HOPE Magazine, Brooklin, *Peace Time*
- Hypermedia, Brooklin, various programs
- Inner Visions, Surry, *New Dimensions*
- Isle Resolve, Deer Isle, *Morning Weather & Southern Wind*
- Joel Raymond Presents, various programs
- Liberty Graphics, Liberty, *New Dimensions*
- Mabel Wadsworth Women's Health Center, Bangor, *This Way Out*
- Maine Alternative Health Guide*, Boothbay Harbor, *Natural Living*
- Maine Boats & Harbors Magazine*, Camden, *Weather, BBC News, & Public Affairs (including Boat Talk)*
- Maine Community Foundation, Ellsworth, *Talk of the Towns*
- Maine Solar, Starks, *Democracy Now!*
- Maine Well-Being, Northport, *Earthtones*
- Mary Johnston, Northport, *Alternative Radio*
- Midcoast Internet Solutions, Rockland, *BBC News*
- Mr. Paperback, Belfast, *On the Wing*
- Mystic Stoneworks, Ellsworth, *Awanadjo Almanac-Reprise*
- The North Atlantic Blues Festival, various programs
- One Heart Drums, Winthrop, *Mostly Manding*
- Orono Farmer's Mrket, *Saturday Morning Coffeehouse*
- Patrishia McLean, Children's Photography, Camden, *Awanadjo Almanac*
- The Peace & Justice Center of Eastern Maine, Bangor, *Democracy Now!*
- Periwinkles Bakery, Searsport, *New Potatoes*
- Pyramid Studios, Ellsworth, *WERU Drive Thru*
- The Redfern Boat Company, Lamoine, *BoatTalk*
- Rupununi, Bar Harbor, *Off the Cuff*
- The Sand Castle, Southwest Harbor, *Morning Weather & EarthSense*
- Second Read Books & Coffee, Rockland, *New Potatoes*
- Shamrock, Thistle & Rose, Belfast, *New Potatoes*
- Silo Seven, Bangor, *Earthtones*
- Southwest Cycle, Southwest Harbor, *On the Wing*
- Smith & May Masonry, West Rockport, *On the Wing*
- Sweetser, *Sun.Morning Coffeehouse, Morning News, & Dem.Now!*
- Tidewater Motel, Vinalhaven, *Barefoot Blues Hour*
- Traditional Acupuncture - Blue Hill, *New Dimensions*
- Two Loons Farm, South China, *Blues the Healer*
- Union River Serigraphics, Ellsworth, Sat. Morning Coffeehouse
- US Bells, Prospect Harbor, *Barefoot Blues Hour*
- VillageSoup.com, *Saturday and Sunday Morning Coffeehouses*
- The Whole Health Center, Bar Harbor, *Local Public Affairs & Dem.Now!*
- Wild Rufus Records, Camden, *Sound Travels & WERU Drive Thru*
- Window Panes, Bar Harbor, *Sound Travels*



North
Light
Books



Main Street, Blue Hill
374-5422
north_light_books@hotmail.com

Mon-Sat 10-6 & Sun 11-5

Friendly Full Service Bookstore

❖ Now Featuring Art Supplies:

- Grumbacher Paints & Brushes
- Strathmore Pads & Papers
- canvas, pencils, & much more

❖ Extensive Children's Selection

❖ Extraordinary books on Art, Sailing & books of Regional Interest

❖ Special Orders, Gift Wrapping, Shipping & Gift Certificates

❖ Now carrying quality used books!

Featuring Organic Green Mountain
C o f f e e s

Penobscot Solar Design - Hard Copy



The Best Value in Home Audio & Home Theatre

341 Ohio Street • Bangor, ME 04401 • (207) 947-4434

Stanley Subaru - Hard Copy

WERU Music Charts

as reported to CMJ the week of November 4th

TOP 30 Chart

- | | |
|---|--|
| 1 Lambchop – Aw Cmon/No You Cmon | 16 Ben Arthur – Edible Darling |
| 2 Patty Griffin – Impossible Dream | 17 Volcano, I'm Still Excited!! – Volcano, I'm Still Excited!! |
| 3 Toots and the Maytals – True Love | 18 Zero 7 – When it Falls |
| 4 Iron and Wine – Our Endless Numbered Days | 19 Outernationalists – Ethnomixicology |
| 5 David Byrne – Grown Backwards | 20 Bad Plus – Give |
| 6 Sondre Lerche – Two Way Monologue | 21 Bob Schneider – I'm Good Now |
| 7 Aveo – Battery | 22 Greg Brown – Honey in the Lions Head |
| 8 Keb' Mo' – Keep it Simple | 23 Ben Kweller – On My Way |
| 9 Sarah Harmer – All of Our Names | 24 Clouddad – Ten Mary |
| 10 Lunasa – Kinnitty Sessions | 25 Lou Lord – Baby Blue |
| 11 Elf Power – Walking With the Beggar Boys | 26 Moonbabies – The Orange Billboard |
| 12 Charlie Musselwhite – Sanctuary Blonde | 27 Lansing-Dreiden – The Incomplete Triangle |
| 13 Redhead – Misery is a Butterfly | 28 Sufjan Stevens – Seven Swans |
| 14 The Owls – Our Hopes and Dreams | 29 Firewater – Songs We Should Have Written |
| 15 Lanterna - Highways | 30 Bigger Lovers – This Affair Never Happened |

RPM Chart

- DJ Cam – Presents Fillet of Soul by Tassel and Naturel
- Bill Laswell – Roir Dub Sessions
- Squarepusher – Ultravisitor
- Clouddad – Ten
- Einsturzende Neubauten – Perpetuum Mobile
- John Beltran – In Full Color
- Frederico Aubelle – Gran Hotel Buenos Aires
- Outernationalists – Ethnomixicology
- Tracks for Horses – Various Artists
- Madison Park – Boutique

Jazz Chart

- Bad Plus – Give
- Fred Hersch Trio - +2
- David Berkman Quartet – Start Here, Finish There
- World Saxophone Quartet – Experience
- Ted Sirota's Rebel Souls – Breeding Resistance
- Andy Bey – American Song
- Bob James Trio – Take it From the Top
- Sam Kininger – Sam Kininger
- Vijay Iyer/ Mike Ladd – In What Language
- Dave Pietro – Embrace: Impressions of Brazil

New World Chart

- | | |
|---|---|
| 1 Toots and the Maytals – True Love | 6 Sergeant Garcia – Le Semilla Escondida |
| 2 Gipsy Kings – Roots | 7 Oumou Sangare – Oumou |
| 3 Frederico Aubelle – Gran Hotel Buenos Aires | 8 Wasis Diop – Everything is Never Quite Enough |
| 4 Lunasa – Kinnitty Sessions | 9 Samurai Collection |
| 5 Eek-A-Mouse – Mouse Gone Wild | 10 Agatsuma – Beyond |

The WERU Music Charts are brought to you by:

Irie Bay CD's at www.reggaeexpress.com	Mr. Paperback Books & Music, Belfast	Wild Rufus Records, Camden
--	---	-------------------------------

Stock Options...

Giving appreciated stock shares to WERU will make you feel good and may help lower your taxes!

For more details, please contact Bob Myers at bob@weru.org or 469-6600.



Showing the Best of American & International Cinema

Waterville



873-6526

www.RailroadSquareCinema.com



Music with Spirit

Singer/Songwriter

Laura Campbell

Spiritual music for ceremonies, rituals and retreats
Earth-centered chanting and drumming
Guitar, rainstick, didgeridoo

zephyr1@prexar.com

207-763-2810

Reel Pizza - Hard Copy

Viking - Hard Copy

Mainescape - Hard Copy



Rhonda P. Feiman
Doctor of Oriental Medicine

Acupuncture & Chinese Herbs

18 Harbor Street,
Belfast, Maine 04915
(207) 338-4454

Celebrating 10 Years of
Serving Our Community

Maine Solar - Hard Copy

WERU thanks all our Business Members!

Please let the following business & organizations know that you appreciate their support for WERU!

- A. E. Sampson & Son, *Warren*
Abrahamson & Associates, *Brooksville*
Acadian Furniture, *Rockport*
ACRES, *Belfast*
Agricola Farms, *Union*
Alford Lake Builders, *Hope*
All Creatures Veterinary Hospital, *Rockport*
Alpine Travel, *Brewer*
Ann Brayton, Boat Cushions & Canvas, *Brooklin*
Apache Boatworks, *Camden*
The Bagel Factory, *Bar Harbor*
Baldwin Apple Ladders, *Brooks*
Bayside Custom Millwork, *Belfast*
Belfast Co-Op, *Belfast*
Belfast Dance Studio, *Belfast*
Bellows Woodworks, *Hancock*
Benjamin Leavitt Metalwork, *Hope*
Bessler Woodworking, *Atkinson*
Birch Corner Farm Timber Frames, *Corinth*
Black Locust Farm B & B, *Washington*
Black Sheep Woolens, *Blue Hill*
Blue Hill Co-Op, *Blue Hill*
Blue Hill Ctr. For Yoga & Wellness, *Blue Hill*
Blue Hill Peninsula Karate, *Blue Hill*
Bog Iron Forge, *Blue Hill*
Brooklin Inn, *Brooklin*
Brooklin Marine Transport, *Brooklin*
Brother Al's Auto Repair, *Belmont*
Brown Clothiers, *Belfast*
Bruce Cassaday, Photography, *Milbridge*
C. O. Beck & Sons, *Waterville*
Carleton H. Mabee, DDS, *Sanford*
Carol's Hair Salon, *Southwest Harbor*
Cedarcrest Motel, *Camden*
Celtic Rainbow Gifts, *Bar Harbor*
Children's Photography, *Camden*
Clark Electronics, *Belfast*
ColeCare of Waldoboro, LMT, *Waldoboro*
Courtesy Motors, *Rockland*
Cyan Dog, *Trenton*
Dahlke Stair Co., *Cherryfield*
Darling's Volkswagen, *Bangor*
Darthia Farm, *Gouldsboro*
Darwin K. Davidson, Photography, *Deer Isle*
David R. Merritt, AIA, *Eddington*
Dennis J. King, Masonry, *Hancock*
Dharma Design Furniture, *Tenants Harbor*
Desert Boat Company, *Bar Harbor*
Diane Viner – Energy Healing, *Surry*
Dillenbeck & Giroux Carpentry, *Searsport*
The Dip Net, *Port Clyde*
Downeast Heritage Center, *Calais*
Ducktrap Kayak, *Lincolnville Beach*
Duvall Design, Inc., *West Rockport*
East Bay Company, *Ellsworth*
Eastern Maine Coastal Development, *Hermon*
Eddie's Flies & Tackle, *Bangor*
Eden Environmental, *Bar Harbor*
EES, Inc., *Waterville*
Elliott Elliott Norelius, *Blue Hill*
Emmaus Homeless Shelter, *Ellsworth*
Energy Options, *Stonington*
Evergreen Bodyworks, *Belfast*
F & D Records, *Stonington*
Fay's One Gallery, *Castine*
F/V Finest Kind, *Friendship*
Fallow Building Services, *Castine*
Fireside Pottery, *Warren*
Florimbi Stuidios, *Rockport*
Franklin Workshops, *Franklin*
Frenchboro Books, Arts & Antiques, *Frenchboro*
Friends of Acadia, *Bar Harbor*

Fritz Gensheimer, Custom Builder, *Cherryfield*
The Gallery at Caterpillar Hill, *Sedgwick*
Gary C. Hunt, Esq., *Ellsworth*
Gath Masonry, *Burnham*
Gemini Marine Canvas, *Rockland*
George & Pat Fowler, Booksellers, *Brooklin*
Greg Rossel Boat Carpentry, *Troy*
Handprints Reflexology, *Surry*
Harbor Watch Motel, Bike & Kayak, *Swans Island*
Heart & Sole Healing Spa, *Bar Harbor*
Herbal Tea & Tobacco, *Bangor*
Holland & Foley Building Design, *Northport*
Hope Orchards, *Hope*
House Revivers, *Bangor*
Indivisible, Inc., *Orono*
Inner Visions, *Surry*
Inner Works, *Rockland*
The Intuitive Path, *Belfast*
Island Acupuncture, *Mt. Desert*
Island Flowers, *Verona*
Jack Pronovost, LMSW, *North Vassalboro*
Jay Peterson Signs, *Sedgwick*
Jaye Orgera, LMT, *Ellsworth*
The Jean O. Gallery, *Blue Hill*
JMS Builders, Uninc., *S Thomaston*
Johnson's Arboriculture-Treekeepers, *Camden*
Jon Smallidge Carpenrty, *Blue Hill*
Joseph Godfrey Construction, *South Thomaston*
K & S Stonescaping, *Washington*
Karen Larsen, Notary Public, *Hampden*
Karmarama, *Rockland*
The Keeper's House, *Isle au Haut*
Knowlton Moving & Storage, *Rockland*
Laura Kelly, PsyD.
Law Offices of Ellen S. Best, *Blue Hill*
Liberty Graphics, *Liberty*
Lind Building & Renovating, *Bremen*
Lippincott Books, *Bangor*
Little Snookers Kids & Kitchen, *Lincolnville*
Lori's Lawns, *Deer Isle*
Lowry Environmental Engineering, *Blue Hill*
Ludwig Tile & Stone, *Newcastle*
Luna Midwifery, *Milbridge*
MacLeod's Restaurant & Pub, *Bucksport*
Mad Captain's House B & B, *Belfast*
Maine Coast Sea Vegetables, *Franklin*
Maine's Best Seafood, *Brooklin*
Mainely Pottery, *Belfast*
Maitri Salon, *Vinalhaven*
Mama's Boy Bistro, *Winter Harbor*
Market On Main, *Rockland*
MaryMcMorrow Adams, MSW, LCSW, *SW Harbor*
McKittrick & Warren, *Camden*
Metaphor Bronze, *Belfast*
Metlife Resources, *Penobscot*
The Mex, *Ellsworth*
Michael Bennett Music, *SW Harbor*
Michael Hallahan – Fine Prints, *Bangor*
Michael Ogden Carpentry, *Camden*
Midcoast Internet Solutions, *Rockland*
Misty Mountain Boatworks, *Hancock*
Modular Media, *Bucksport*
Muscongus Bay Lobster Co., *Round Pond*
Music Laos Project, *Blue Hill*
Muzzy Ridge Woodworkers, *Searsmont*
Nance's Crackers, *Bucksport*
NewAim Farm, *Waldoboro*
Northern Maine Construction, *Bangor*
Once a Tree, *Camden*
Oyster Creek Mushroom, *Damariscotta*
Pain de Famille, *Blue Hill*
Parker's Frame Shop, *Deer Isle*

Passion Food, *Bar Harbor*
Patti Buchanan, LMT, *Camden*
Peace & Healing Flax Pax, *Liberty*
Peacock Company, *Lamoine*
Penobscot Bay Growers, *Penobscot*
Peter F. Meyer, D.D.S., *Ellsworth*
Post Trauma Services - Downeast, *Ellsworth*
The Potter's House, *Winthrop*
Princell Woodworks, *Brooklin*
Pro Libris Book Shop, *Bangor*
QA13 Architects, *Bangor*
Raven Tree Gallery, *Sullivan*
Red's Automotive, *Stockton Spirngs*
Reel Pizza Cinerama, *Bar Harbor*
Richard Bradford Builder, Inc., *Rockport*
Robert Curry Consulting, *Unity*
Rock Maple Realty, *Union*
Rockport Charters, *Rockport*
Rockport Marine, *Rockport*
Rockport Mechanical Inc., *Rockport*
Roy, Beardsley, Williams, & Granger, *Ellsworth*
The Sand Castle, *Southwest Harbor*
Sandra Collier Law Offices, *Ellsworth*
Schooner Mary Day, *Camden*
Schooner Simplicity, *Rockland*
Sharma Buell, Therapeutic Massage, *Blue Hill*
Shep's Imports, *Union*
Sheppard & Garster Land Surveyors, *Bangor*
Shipyard Point Glassworks, *Franklin*
Shoegazer, *Ellsworth*
Sirius Graphics, *Warren*
Sisters Salsa, *Blue Hill*
Sleepy Hollow Rag Rugs, *Lincolnville*
Snakeroot Farm, *Warren*
Sonia Turanski, LMT, *Blue Hill*
Spruce Mountain Plumbing, *Rockport*
St. George Farm, *Montville*
St. George Pottery, *St. George*
Star Boat Company, *Spruce Head*
Starflower Clay Studios, *Monroe*
Steve Soucy: Handyman, *Ellsworth*
Stone Boat Architectural Drafting, *Newcastle*
Stone Septic Service, *Gouldsboro*
Storm Lobster Co., *Monhegan Island*
Sunflower Garden, *Bar Harbor*
Sweet Pea's Farm Store, *Bar Harbor*
Sweet Timber Frames, *Mt. Desert*
Theodore & Theodore Architects, *Wiscasset*
The Thirteenth Moon, *Montville*
Tile It Like It Is, *Cherryfield*
Timberhead Music, *Camden*
TJM Consulting, *Liberty*
Tom's Terrific Tattoos, *Ellsworth*
Tree Feller, *Penobscot*
Turkey Cove Auto Repair, *Tenants Harbor*
The Turtle Gallery, *Deer Isle*
Ullikana In The Field Inn, *Bar Harbor*
Union Street Oriental Rugs, *Blue Hill*
Unity Center for Performing Arts, *Unity*
URS Screenprinting & Design, *Ellsworth*
Vela Day Sails, *Sedgwick*
Ventana Replacement Windows, *Camden*
Wanning Tree Service, *Blue Hill*
Ward Dairy Farm, *Thorndike*
Wells Fargo Home Mortgage, *Bar Harbor*
Wellspring Therapy, *Brooksville*
White Oak Apiary, *Whitefield*
Willey Tree Farm, *Cherryfield*
William Armstrong, CMT, *Northport*
William Turner, Woodworker, *Stonington*
The Wooden Peg, *Warren*

Let your community know
that *your* business supports this grass-roots, community resource!

Would you like to support WERU with your business?
Find out more about underwriting, business membership and advertising in *Salt Air*...
For information about the benefits of contributing to WERU through your business,
please call 469-6600 or email sammy@weru.org!

For example: Become a Business Member for a year for \$200.
Advertise in 4 issues of Salt Air starting at \$160 (\$40 per ad).
Underwrite your favorite program for a year for \$450 to \$600.

Local Business Supporting Community Radio

News, Public Affairs, Commentary, Information, Insights, Entertainment, and more!

- Samantha Riegel,
WERU Publications Manager



Salt Air

Community Radio News & Program Guide

FREE - Please Take One!

Spring 2004 Issue

SCAN ARTWORK

P.O. Box 170
East Orland, ME 04431
(207) 469-6600
www.weru.org
info@weru.org

NON-PROFIT ORG.
PRSR STD
U.S. POSTAGE
PAID
Permit #82
Ellsworth, ME

WERU-FM 89.9 Blue Hill & 102.9 Bangor Program Schedule

	SUNDAY	MONDAY	TUESDAY	WEDNESDAY	THURSDAY	FRIDAY	SATURDAY
5	FOLK Sunday Morning Coffeehouse Susan Connery Emma Finn Mary Kellett Blue Macaw	NEW AGE Sunrise Service					FOLK Saturday Morning Coffeehouse Matt Baya Brendan Curran Ken Gross Chuck Markowitz
6		ECLECTIC MIX OF AMERICANA (with news, weather, & short features)					
7		Morning Maine					
8		Allison Gladstone	Joe Porada	John Waters	Karen Frangoulis	Joel Mann & Denis Howard	
9		FOLK Goodfolk Mtg House Susan	BLUES Bourgeois Blues Haydee Foreman	BLUES Barefoot Blues Hour	COUNTRYDownhome Country Tommy & Doc	FOLK Loafer's Glory U. Utah Phillips	
10	PHILOSOPHY New Dimensions	Connery	INFORMATION & PUBLIC AFFAIRS*				CHILDREN'S Over the Rainbow
11	JAZZ Come Sunday Dan Avener, Ayola Green, Jay Peterson, Parker Waite	Alternative Radio	Rotating Programs	Health Related	Rotating Programs	Local Live Call-In	WORLDBEAT Sound Travels Jim Bahoosh
12	MUSIC/STORIES The General Store	ECLECTIC CONTEMPORARY MUSIC (Singer-songwriter, Folk, Rock, World, Jazz, & More!) On The Wing					REGGAE Reggae Reprieve Gray Parrot, Christian Sulik
1		Karen Doherty	John Babcock	Brother Al, Sister Mango	Mark Dyer	Joel Raymond	
2	REGIONAL FOLK & ROCK Homespun Bill Pratt, Kathie Pratt	NEW AGE & INDIGENOUS Earthtones Karen Larsen	AFRICAN Mostly Manding Ousman Jobarteh	ECLECTIC Off the Cuff Cathy Melio	R & B X-Large Soul Show Alan Sprague	REGGAE, SALSA, JAZZ, & POLKA Talking Furniture Ras Chicopee	AMERICAN PARTY MUSIC
3	CELTIC New Potatoes George Fowler Kathleen Rybarz	WINGS		This Way Out	Voices*	RadioActive*	Counterspin
4		Free Speech Radio News					Stacks O' Tracks Charlie Oldham
5		Democracy Now!					Scouting the Peri- meters Joneford
6	WORLD A World of Music Greg Rossel	JAZZ				ECLECTIC ROCK Departure Mike Domrad Kim Mitchell	ECLECTIC Airwaves David J. Snyder
7		The Jazz Scene Chris Poulin	In the Moment Byron Greatorex	Jazz Plus Jeri Spurling, Radio Jones	Groove Shop Holbrook Williams		
8	WOMEN Women's Windows Magdalen Linda Washburn	BLUES Blues the Healer Paula Greatorex	LATIN/ZYDECO/ DELTA BLUES A Southern Wind Ric Pomilia	REGGAE WERU Drive Thru Carlton Johnson Christian Sulick	BLUEGRASS Bronzewound Darwin Davidson David Manski	HIP HOP, etc. Da VibeZ Heather Bowman, Magnus Johnston, Christian Sulick	ALL 80's The Doll House Jane Clarke
9	SATIRE Le Show w/ H.Shearer	AFRICAN Rhythm of Life Greg Smith	60's & 70's ROCK Old Woodstock Bob LeVangie	BLUES Blues Hang-Out John Skinner	DYLAN Highway 61 Doc Defour	MODERN ROCK No Toes Up Patrick J.	PUNK ROCK & TECHNO Hotel Yorba Rick Kidson
10		ECLECTRONICA & SPOKEN WORD The Matrix Magnus Johnstone		ECLECTIC Northern Journeys The Ellis Family	ECLECTIC Insomniac's Mix Melacinda 2 to 5 AM on Wed.	* See page 11 for the titles & descriptions of WERU's public affairs and spoken word programs & features.	
11							
12							
1							
2							